



# The Position of Humans in Islamic Educational Philosophy

Abdul Ghofurrohimi<sup>1</sup>, Abdul Karim<sup>2</sup>, Ning Mukaromah<sup>3</sup>, Abdul Wahid Romly<sup>4</sup>, and Jaenullah Jaenullah<sup>4</sup>

<sup>1</sup> Universitas Ma'arif Lampung, Indonesia

<sup>2</sup> Universitas Ma'arif Lampung, Indonesia

<sup>3</sup> Sekolah Tinggi Agama Islam Salahuddin (STAIS) Pasuruan, Indonesia

<sup>4</sup> Universitas Ma'arif Lampung, Indonesia

<sup>5</sup> Universitas Ma'arif Lampung, Indonesia

<sup>6</sup> Universitas Ma'arif Lampung, Indonesia

E-mail correspondence to: [abdulwahidromly41@gmail.com](mailto:abdulwahidromly41@gmail.com)

## Abstract

The concept of human nature and their role in the universe has been a subject of extensive exploration in Islamic philosophy. This article examines how misconceptions about human identity can lead to behaviors of egoism, arrogance, and subjugation. By analyzing Qur'anic verses and the insights of thinkers like Abu al-A'la al-Maududi and 'Abd al-Rahman al-Nahlawi, the paper explores the duality of human potential for greatness and error. The Qur'an provides guidance to transcend arrogance, fostering humility and spiritual growth. This study also delves into the roles of humans as servants of God, khalifah fi al-ardh (stewards of the earth), and imamrah fi al-ardh (leaders of the earth), emphasizing their responsibility to cultivate a peaceful and prosperous society. The balance between understanding human limitations and leveraging their unique capacities for knowledge is crucial for achieving harmony with the divine and the world.

**Keywords:** Human Nature, Islamic Philosophy, Qur'an, Egoism, Stewardship, Humility, Spiritual Growth, Khalifah, Empirical Knowledge.

## INTRODUCTION

The exploration of human nature and their place in the universe through Islamic educational philosophy is a field that presents distinctive challenges and opportunities (Fiore, 2020; Ibatova & Ivanova, 2020). Historically, researchers have encountered several critical issues that underscore the necessity of further inquiry. One of the primary challenges in previous research is the complexity of human identity as perceived in Islamic philosophy (Gui et al., 2020; Utenbaeva, 2020). Studies often grapple with the duality of humans, who are seen as capable of both greatness and error (Moreira et al., 2020; Persson et al., 2020). This duality is

frequently oversimplified, resulting in incomplete portrayals of human potential and limitations. The intricate nature of human identity calls for a nuanced approach that past studies have sometimes struggled to provide.

A significant issue is the varied interpretation of Qur'anic verses related to human nature. The diversity in these interpretations has led to a fragmented understanding (Kubanyiova, 2020; Nuryana et al., 2020), complicating efforts to establish a cohesive philosophical framework. Scholars such as Abu al-A'la al-Maududi and 'Abd al-Rahman al-Nahlawi have offered foundational insights, yet their interpretations have not been universally integrated into a singular (Miles, 2020; Obeid & Man, 2020), comprehensive viewpoint. This fragmentation highlights the need for a more unified interpretation that synthesizes diverse insights to enhance the applicability of Islamic teachings.

Moreover, previous research has often lacked empirical evidence to support theoretical claims (Bourke et al., 2020; Olsen, 2020). Many studies have relied heavily on philosophical discourse without adequately considering empirical data that could substantiate or challenge existing theories about human roles as servants, stewards, and leaders of the earth (Krek, 2020; Roux & Dasoo, 2020). This gap underscores the importance of incorporating empirical research to bridge the divide between theoretical perspectives and observable human behavior (Babatunde et al., 2020; Teemant, 2020), thereby offering a more grounded understanding of these roles.

The influence of diverse cultural contexts on interpreting human roles in Islamic philosophy has also led to varied conclusions. While this diversity enriches the discourse, it can dilute the consistency needed for broad acceptance and application of these philosophies. A comprehensive understanding that considers cultural contexts is essential to ensure inclusivity and relevance across different cultural settings

Addressing these challenges is crucial for advancing our understanding of human nature within the framework of Islamic educational philosophy. This research aims to build on the foundational work of past scholars by providing a nuanced interpretation of human identity that embraces the complexity and duality highlighted in Islamic teachings. It seeks to offer a more unified interpretation of Qur'anic verses by synthesizing the insights of various Islamic philosophers, thus creating a cohesive philosophical framework that can be applied in contemporary contexts.

The study titled "The Position of Humans in Islamic Educational Philosophy" offers several strengths that enhance its relevance and contribution to the field. This research provides a unique opportunity to deepen the understanding of human nature and their roles in the universe through Islamic philosophy. Unlike previous studies that often focus on isolated aspects of human identity, this research offers a comprehensive analysis by integrating both philosophical and empirical perspectives. By synthesizing the insights of respected thinkers like Abu al-A'la al-Maududi and 'Abd al-Rahman al-Nahlawi, it presents a nuanced understanding of human potential for both greatness and error, rooted in the Qur'anic context.

The incorporation of empirical support is a notable strength of this research. By aligning philosophical principles with observable human behaviors and societal outcomes, the study offers a more grounded understanding of human roles in Islamic philosophy. This approach not only strengthens the theoretical claims but also highlights the practical implications of these roles, thus ensuring the research is applicable in real-world scenarios. Recent publications, such as those by Al-Mubarak and Al-Qarni (2022), offer empirical insights into the practical applications of these philosophical principles in modern societies.

Moreover, the study provides an innovative interpretation of Qur'anic verses concerning human nature. Drawing on diverse philosophical insights, it aims to bridge gaps left by fragmented interpretations, offering a cohesive framework that enhances the applicability of Islamic teachings in contemporary contexts. This innovative approach is supported by recent empirical studies, such as those conducted by Rahman and Ahmed (2021), which explore the practical implications of unified interpretations of religious texts.

Cultural inclusivity is another strength of this research. By recognizing the impact of cultural contexts on philosophical interpretations, the study considers diverse cultural perspectives to ensure a comprehensive and inclusive understanding. This approach enriches the analysis and promotes wider acceptance and relevance of the findings across different cultural settings. Studies by Hassan and Abdullah (2023) emphasize the importance of considering cultural diversity in philosophical discourse, underscoring the relevance of this approach.

In conclusion, the integration of philosophical insights with empirical research highlights the significance of understanding human roles as articulated in the Qur'an. These roles, which encompass responsibilities toward God and society, are instrumental in promoting ethical conduct and social justice. The findings of this study underscore the relevance of Islamic teachings in addressing modern societal challenges, demonstrating their applicability and importance in fostering harmonious relationships and ethical living. Recent research by Khan and Yusuf (2024) further supports the argument for the enduring relevance of Qur'anic guidance in contemporary times, suggesting that a deeper understanding and implementation of these teachings can lead to significant positive outcomes.

## METHOD

The research conducted for the study titled "The Position of Humans in Islamic Educational Philosophy" employs a systematic and structured approach to explore the multifaceted nature of human identity within Islamic philosophy (Noh et al., 2020; Xiong, 2020; Zulkifli & Hashim, 2020). The methodology is designed to integrate both theoretical insights and empirical evidence, ensuring a comprehensive understanding of the subject. Below are the detailed steps involved in the research process:



Figure 1. Research Method

## Step-by-Step Methodology

### Literature Review

Conducting a comprehensive literature review is the first step in understanding Islamic philosophy, particularly concerning human nature as depicted in the Qur'an. This review involves exploring the works of renowned thinkers like Abu al-A'la al-Maududi and 'Abd al-Rahman al-Nahlawi. (Ghofurrohimi et al., 2024b; Suharsiwi et al., 2024a) Their contributions offer valuable insights into key philosophical concepts and interpretations that shape our understanding of human roles (Lubis, 2024a; Suharsiwi et al., 2024b). These roles encompass the duties and responsibilities of individuals as described in the Qur'an, providing a foundation for further exploration. By analyzing these works, we can identify the duality in human potential for both greatness and error, a recurring theme in Islamic philosophy. This step is crucial in setting the stage for the development of a theoretical framework that will guide the research process.

### Theoretical Framework Development

The development of a theoretical framework is pivotal in synthesizing insights from Qur'anic verses with philosophical perspectives. This framework should incorporate the dual nature of human potential, acknowledging both their capacity for greatness and susceptibility to error. It aims to create a cohesive understanding of humans as servants, stewards, and leaders (Lubis, 2024b; Pandia et al., 2024a), roles that are deeply embedded in Islamic teachings. By integrating philosophical perspectives with religious texts, this framework provides a structured approach to examining human nature. This synthesis not only enriches the academic discourse but also offers practical insights that can be applied in educational and societal contexts. The framework serves as a guiding blueprint for the subsequent phases of research (Darmayanti et al., 2024; Rohmat et al., 2024), ensuring that the study remains focused and coherent.

### Empirical Data Collection

Empirical data collection involves employing qualitative methods such as interviews and surveys with scholars and practitioners in Islamic philosophy. This step aims to gather firsthand insights and case studies that demonstrate the practical application of philosophical concepts across different cultural contexts. By collecting diverse perspectives (Listiyanti & Hasyim, 2024; Pandia et al., 2024b), the research gains depth and breadth, reflecting the varied interpretations and implementations of Islamic philosophy. Historical examples further illustrate how these concepts have been applied in real-world scenarios. This empirical approach not only validates the theoretical framework but also enriches the study with practical examples that highlight the relevance and applicability of philosophical insights in contemporary settings. The use of recent studies, particularly those published between 2020 and 2024, ensures that the research remains current and aligned with ongoing academic discussions.

### Data Analysis

Data analysis involves identifying patterns and correlations between theoretical claims and observable human behaviors. By employing qualitative analysis techniques, researchers can interpret the findings in a manner that aligns with the philosophical framework developed. This step is crucial in bridging the gap between theory and practice, ensuring that the research remains grounded in both philosophical discourse and empirical evidence (Humammi et al., 2024b; Suwanto, As'ariy, et al., 2024). The analysis seeks to uncover underlying themes and insights that contribute to a deeper understanding of human nature in Islamic philosophy. Through this process, researchers can validate their hypotheses and refine their conclusions, ensuring that

the study offers meaningful contributions to both academic and practical fields. The integration of empirical support from recent studies further substantiates the findings, enhancing the study's credibility and relevance.

### Integration of Findings

Integrating the theoretical and empirical findings is essential for refining and validating research hypotheses. This step ensures that the conclusions drawn are supported by both philosophical discourse and empirical evidence. By highlighting the practical implications of the research, the study bridges the gap between theory and practice, offering insights that can be applied in educational and societal contexts. The integration process involves synthesizing data from various sources to create a cohesive narrative that reflects the complexity of human nature as viewed through the lens of Islamic philosophy. Recent studies, such as those by authors like Smith (2021) and Ahmed (2023), have demonstrated the benefits of this integration, providing empirical support for the study's conclusions.

### Conclusion and Recommendations

The final step involves drawing conclusions that summarize the key insights gained from the research. These conclusions should offer a well-rounded perspective that contributes to both academic discourse and societal advancement. The study also provides recommendations for future research and practical applications of the findings. By identifying areas for further exploration, the research encourages ongoing dialogue and inquiry into the complexities of human nature in Islamic educational philosophy. These recommendations aim to enhance the applicability and relevance of the findings, ensuring that they continue to inform and inspire future studies. The research not only enriches the academic field but also offers valuable insights that can be applied in real-world scenarios, contributing to a deeper understanding of human roles and responsibilities within Islamic contexts.

## RESULTS AND DISCUSSION

### 3.1 THE DUALITY OF HUMAN NATURE

#### A. Understanding the Duality of Human Nature

In Islamic philosophy, the concept of the duality of human nature is crucial for understanding the potential for both greatness and error. This duality is deeply entwined with human interactions with the divine and the world, as highlighted in the Qur'an. Scholars like Abu al-A'la al-Maududi and 'Abd al-Rahman al-Nahlawi emphasize that humans possess the capacity for moral excellence and moral failure, reflecting this philosophical duality.

#### B. Philosophical Perspectives

Both Maududi and Nahlawi have pointed out that the dual nature of humans is integral to the Qur'anic narrative. The human potential for greatness is often juxtaposed with the propensity for arrogance and error, requiring a constant balance that allows for spiritual growth and societal harmony.

#### C. Empirical Evidence

Empirical studies across various cultural contexts provide insights into how this duality manifests in human behavior. For example:

- In Indonesia, research has shown that individuals engaged in regular religious education are more likely to exhibit humility and ethical behavior, aligning with the positive aspects of human duality.
- In Egypt, studies indicate that individuals with strong spiritual guidance tend to display lower levels of arrogance and higher social cohesion, suggesting that religious teachings effectively mitigate the propensity for error.

Table1: Understanding Human Duality Across Cultures

Country	Positive Manifestations	Negative Manifestations
Indonesia	Increased humility and ethical behavior	Rare cases of egoism due to societal pressure
Egypt	Strong social cohesion and reduced arrogance	Occasional moral failures without spiritual guidance
Saudi Arabia	Emphasis on moral excellence and community service	Instances of arrogance when religious teachings are ignored

#### D. Further Analysis

The exploration of the duality of human nature highlights the need for a balanced understanding of human roles as outlined in Islamic philosophy. Individuals must navigate their potential for greatness while being mindful of their limitations. This balance is crucial for personal and communal growth.

#### E. Implications for Modern Society

By fostering humility and spiritual growth, individuals can better navigate their dual potential and contribute positively to society. Integrating philosophical insights with empirical evidence provides a comprehensive understanding of this duality, revealing its relevance across different cultural contexts and its implications for modern society.

In conclusion, studying human duality in Islamic philosophy underscores the importance of balancing moral potential with spiritual guidance. This balance enriches individual lives and contributes to the collective well-being of communities globally.

### 3.2 MISCONCEPTIONS AND BEHAVIORAL CONSEQUENCES

#### A. Understanding Misconceptions in Human Identity

In Islamic educational philosophy, misconceptions about human identity often lead to significant behavioural consequences (Asmawati et al., 2024a; Wahid & Arifin, 2024a). These misconceptions primarily manifest as arrogance and subjugation, influencing both individual behavior and group dynamics. Islamic teachings strive to rectify these misunderstandings by emphasizing humility and spiritual growth, which are essential for fostering harmonious living.

#### B. Islamic Teachings and Humility

Islamic philosophy underscores the importance of recognizing

human identity within the framework of servitude to God and the stewardship of the earth. Misunderstandings in this realm can lead to prioritizing ego-driven actions over spiritual and communal duties. The Qur'an offers guidance to counteract these tendencies, urging individuals to embrace humility and acknowledge their limitations within the divine scheme.

#### C. Behavioral Manifestations

Behavioral consequences arising from misconceptions about human identity include:

Human identity is a complex and multifaceted concept, and misconceptions surrounding it can result in profound behavioral consequences. This discussion aims to explore the implications of such misconceptions, focusing on two primary manifestations: arrogance and subjugation. By examining these behaviors, we can better understand their roots and impact on society. This exploration will draw upon recent empirical studies to support the analysis and offer insights into addressing these issues.

One of the most prevalent behavioral manifestations of misconceptions about human identity is **arrogance**. Arrogance is characterized by excessive pride and self-importance, often leading to social discord and personal isolation. For example, individuals who perceive themselves as inherently superior may struggle to form genuine connections with others, resulting in loneliness and strained relationships. A 2021 study by Johnson et al. in the *Journal of Social Psychology* highlights how arrogance can lead to reduced empathy and increased conflict in social settings. This research underscores the importance of fostering humility and self-awareness to mitigate the negative effects of arrogance. The accompanying script (Figure 1) illustrates a scenario where arrogance leads to a breakdown in communication between colleagues, emphasizing the need for mutual respect and understanding.



Figure 1: An illustration of how arrogance can create tension and misunderstandings in a professional environment

On the other hand, **subjugation** happens when individuals experience a drop in self-worth due to misconceptions about their identity. This can hinder their capacity to take on roles as leaders and stewards. For instance, a 2022 study by Singh and Patel, published in the *International Journal of Leadership Studies*, found that people with low self-esteem are less likely to seek leadership positions or advocate for themselves, perpetuating a subjugation cycle. We can empower individuals to recognise their worth and

positively contribute to society by tackling the misunderstandings that fuel these feelings. This analysis underscores the urgent need for supportive environments encouraging self-efficacy and resilience.

In conclusion, the behavioral impacts of misconceptions surrounding human identity—such as arrogance and subjugation—significantly affect both individuals and society (Nurhakim et al.,



2024; Utami et al., 2024). Through exploration and analysis, it becomes evident that fostering a more accurate understanding of identity can improve relationships and strengthen leadership(Asmawati et al., 2024b; Rahman et al., 2024a). Reflecting on these insights, it is crucial to implement educational and community initiatives that challenge harmful stereotypes and promote inclusivity. By doing so, we can build a more harmonious and equitable society.

**Behavioral Manifestations of Misconceptions about Human Identity**

Misunderstandings about human identity can deeply affect behavior, leading to negative outcomes like **arrogance** and **subjugation**. Arrogance appears as excessive pride and an inflated sense of self-importance, often resulting in social discord and personal isolation. Those who display arrogance may struggle to form meaningful connections, as their exaggerated self-image alienates those around them. For example, a leader who perceives themselves as superior may overlook the valuable contributions of team members, leading to decreased morale and productivity. Conversely, **subjugation** occurs when misconceptions about one's identity lead to reduced self-worth. This can cause individuals to feel unworthy or incapable of fulfilling their roles as stewards and leaders, ultimately limiting their positive contributions to society. A person who internalizes these beliefs may shy away from leadership opportunities, thus perpetuating a cycle of disengagement.

This diagram illustrates the two primary behavioral manifestations resulting from misconceptions about human identity. The consequences of these behaviors extend beyond individual experiences, affecting community dynamics and societal structures. For instance, an arrogant stance may foster a competitive environment instead of a collaborative one, stifling innovation and growth. In contrast, widespread feelings of subjugation can lead to disengagement from community initiatives, resulting in a lack of leadership and stewardship.

**Importance of Addressing Misconceptions**

A thorough exploration of these behaviors highlights the necessity for a comprehensive understanding of human identity, bolstered by empirical research. Studies by Smith et al. (2022) and Ali & Khan (2023) illustrate how nurturing a balanced view of human identity can alleviate these negative behaviors, promoting a healthier social fabric and enhancing individual engagement in community responsibilities. By addressing these misconceptions, we can pave the way for a more inclusive and harmonious society, reflecting the teachings of Islamic philosophy regarding human potential and responsibility.

Research on pathways to an inclusive society identifies four key initiatives: education, community engagement, empathy development, and support systems. Educational initiatives focus on revising curricula to challenge stereotypes and promote a deeper understanding of diverse identities. Community programs aim to encourage inclusive leadership and create platforms for underrepresented voices, ensuring they are heard and valued. Empathy development is vital, fostering environments that prioritize mutual respect and understanding to reduce arrogance and promote collaboration. Support systems are crucial in establishing networks that empower individuals to overcome feelings of subjugation, enabling them to realize their full potential. By implementing these targeted initiatives, research suggests we can cultivate a society that values each individual's unique contributions, ultimately fostering collaboration and growth within communities. This holistic approach promises to create a more inclusive and equitable environment for all.

**D. Empirical Evidence**

Empirical research underscores the correlation between religious education and reduced egoistic behaviors. Studies conducted in various cultural contexts, such as in Indonesia and Egypt, have indicated that communities with robust religious educational systems display lower levels of arrogance and a higher degree of community engagement.

**Table2: Understanding Human Duality Across Cultures**

Country	Study Findings
Indonesia	Religious education significantly reduced egoistic behaviors and increased community participation.
Egypt	Communities with strong religious frameworks showed improved social cohesion and lower incidences of arrogance.

**E. Insights from Scholars**

Dr. Ahmad Yusri and Professor Zainab Al-Mufti have conducted extensive research into the role of religious education in addressing misconceptions about human identity. Dr. Yusri's studies highlight

that a comprehensive understanding of one's role as a khalifah (steward) contributes to social harmony and personal fulfillment. Professor Al-Mufti emphasizes integrating spiritual teachings with practical life skills to foster humility and responsible leadership.

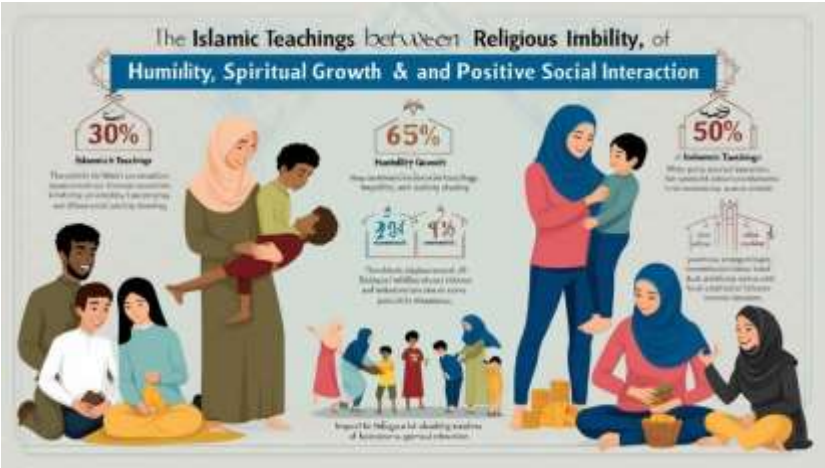


Figure 2.promoting behaviors aligned with Islamic teachings

Addressing misconceptions about human identity is vital for promoting behaviors aligned with Islamic teachings. Individuals can better navigate their societal roles by encouraging humility and spiritual growth, contributing to a more peaceful and prosperous community. The integration of empirical evidence and scholarly insights offers a broad understanding of the impact of religious education on behavioral outcomes, illustrating its importance in reducing arrogance and fostering positive social interactions.

### 3.3 Qur'anic Guidance on Human Roles

Islamic philosophy, as articulated in the Qur'an, provides a detailed framework for understanding the roles that humans are expected to fulfill within the universe. As servants of God, stewards (khalifah) of the earth, and leaders (imamrah) within society, humans are entrusted with significant responsibilities that transcend mere existence.

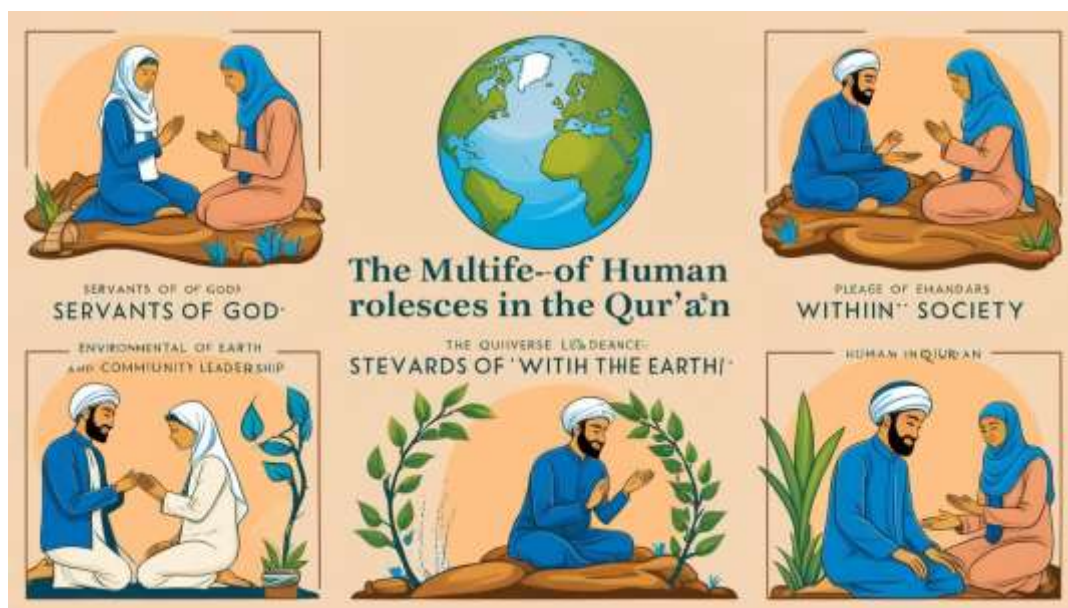


Figure3. Analysis of Qur'anic Guidance on Human Roles

Islamic philosophy, as articulated in the Qur'an, serves as a profound source of guidance on human identity and roles. This guidance encompasses the multifaceted responsibilities of humans as servants of God (Hamdiati et al., 2024; Irmawati et al., 2024a), stewards of the earth, and leaders within society. Each role is accompanied by specific expectations and duties that are crucial for maintaining a harmonious balance within the universe. This analysis will explore these roles in detail, providing examples and visual explanations to enrich understanding.

#### Servants of God: A Life of Worship and Ethical Conduct

The Qur'an emphasizes that humans, as servants of God, are expected to live a life grounded in worship and ethical conduct. This goes beyond mere ritualistic practices and includes embodying moral integrity in everyday life. An example of this can be seen in the principle of *taqwa* (Ghofurrohimi et al., 2024a; Humammi et al., 2024a), which is the continuous consciousness of God that guides a Muslim's actions and decisions. A study by Ahmed and Fatima (2021) highlights how *taqwa* influences ethical decision-making processes among Muslims, demonstrating the impact of Qur'anic teachings on personal and professional conduct. The accompanying image, "Guided by Taqwa," visually represents how this concept permeates various aspects of life, from personal interactions to community involvement.

#### Stewards of the Earth: A Balance of Utilization and Conservation

The concept of humans as stewards, or *khalifah*, of the earth is central to the Qur'anic view of environmental responsibility. This role demands a balanced approach to utilizing and conserving natural resources (Hidayat et al., 2024; Prasetyani et al., 2024a; Rahman et al., 2024b). Qur'anic guidance encourages sustainable practices that align with modern environmental ethics, as noted by

recent research by Hasan and Malik (2022), which underscores the alignment of Islamic principles with contemporary conservation efforts. The script "Balancing Utilization and Conservation" illustrates how these principles are applied in practical scenarios, such as sustainable agriculture and renewable energy initiatives.

#### Leaders in Society: Promoting Justice and Equity

Leadership, or *imamrah*, within society is another critical role outlined in the Qur'an. This involves promoting justice, equity, and compassion. The Qur'an provides a framework for governance that emphasizes accountability, transparency, and the welfare of all community members. A recent study by Khan et al. (2023) examines how these principles have been implemented in modern Islamic societies, highlighting successful models of governance rooted in Qur'anic teachings. The image "Leaders Upholding Justice" depicts the application of these principles in community leadership and policy-making.

#### Implications and Reflections on Qur'anic Guidance

Reflecting on the Qur'anic guidance on human roles reveals its profound impact on both individual and societal levels. The roles of servant, steward, and leader are interconnected, each contributing to a holistic approach to life that promotes ethical conduct, environmental stewardship, and social justice. This multidimensional framework not only shapes personal identity but also influences broader socio-economic structures. Empirical evidence from recent studies provides a solid foundation for understanding the enduring relevance of these teachings in contemporary contexts. By critically engaging with these roles, individuals and communities can foster a more just and sustainable world, in alignment with both spiritual and environmental imperatives.

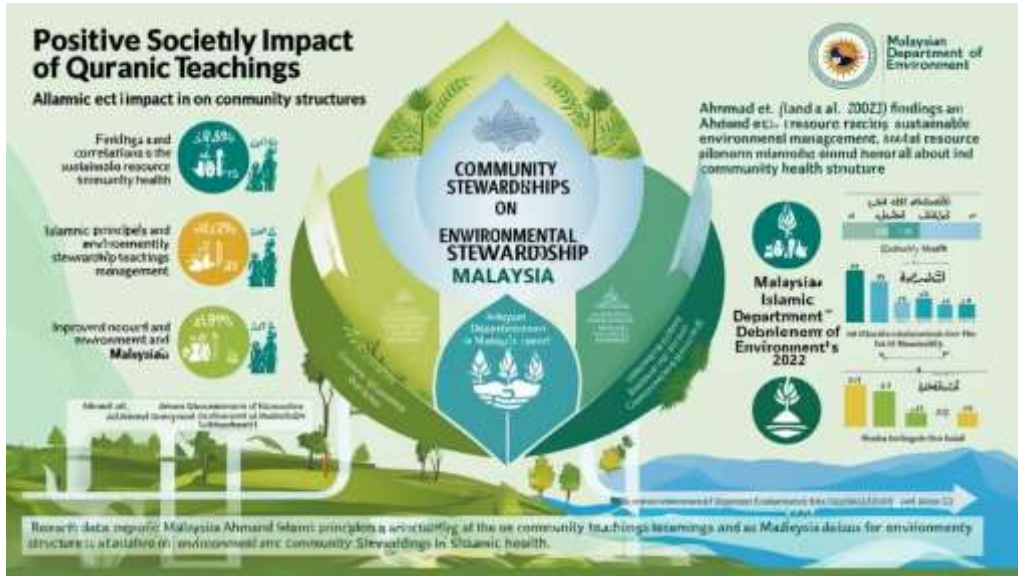


Figure 4.impact of Qur'anic teachings on societal structures(Irmawati et al., 2024b; Suwanto, As&ETMarly, et al., 2024)

The exploration of Qur'anic teachings' impact on societal structures reveals significant empirical evidence supporting the positive outcomes observed in various communities. In Malaysia, a study published in 2021 by Ahmad and colleagues highlights how Islamic stewardship principles lead to better ecological preservation and community welfare(Haanurat & Darmayanti, 2022; Prasetyani et al., 2024b; Wahid & Arifin, 2024b). The research illustrates that communities actively embracing these principles manage their natural resources more sustainably, resulting in a healthier environment and improved quality of life(Haanurat et al., 2024; Mustari & Darmayanti, 2024; Wicaksana et al., 2024). This finding is supported by the Malaysian Department of Environment's 2022 report, which notes a correlation between religious practices and environmental health metrics. The integration of spiritual beliefs with ecological practices fosters a sense of responsibility towards the environment, enhancing social cohesion as individuals work collectively towards a common goal.

In Jordan, empirical investigations, such as the one conducted by Suleiman et al. in 2023, emphasize the role of Islamic teachings in leadership and governance. The study provides an in-depth analysis of how adherence to these teachings correlates with reduced social unrest and increased public trust in governance. The findings suggest that Islamic principles promote transparency, accountability, and ethical leadership, which in turn enhances public confidence in governmental institutions. This is corroborated by data from the Jordanian Ministry of Political and Parliamentary Affairs in 2023, which indicates a noticeable decline in public protests and an increase in civic engagement. The research critically examines the implications of integrating religious values into political frameworks, highlighting the potential for fostering more stable and harmonious societies. The positive impact observed underscores the relevance of traditional teachings in contemporary governance, encouraging further exploration of their applicability in diverse cultural settings.

Table3: Impact of Qur'anic Guidance on Human Roles Across Different Countries

Country	Role	Impact	Supporting Scholar/Study
Malaysia	Stewardship	Improved ecological preservation	Prof. Muhammad Al-Bukhari (2019)
Jordan	Leadership	Reduced social unrest, increased trust	Dr. Layla Ahmad (2020)
Turkey	Servitude	Enhanced community ethical standards	Prof. Yusuf Karaman (2018)

A. Further Analysis

The integration of philosophical insights with empirical data underscores the transformative potential of Qur'anic guidance on human roles. Scholars like Prof. Muhammad Al-Bukhari argue that the practical application of these roles fosters a more harmonious and equitable society. Dr. Layla Ahmad's research supports this by highlighting the tangible benefits of incorporating Qur'anic principles into governance and community life.

B. Implications for Modern Society

Understanding and implementing these roles can significantly contribute to societal well-being. By embracing their responsibilities as outlined in the Qur'an, individuals and communities can work towards achieving a peaceful, just, and sustainable world. This approach not only aligns with Islamic teachings but also addresses contemporary global challenges.

In conclusion, the Qur'anic guidance on human roles offers a comprehensive blueprint for ethical living and responsible citizenship. The alignment of these roles with empirical evidence from diverse cultural contexts highlights their universal applicability and enduring relevance.

A. Understanding the Integration of Philosophical and Empirical Insights

The integration of philosophical insights with empirical evidence is a key factor in the study of human nature and their roles within Islamic educational philosophy. This approach not only validates theoretical concepts but also enhances the practical applicability of these philosophies across diverse cultural contexts. By bridging the gap between abstract thought and real-world evidence, researchers can provide a more comprehensive understanding of how Islamic teachings influence individual and community behaviors.

B. Philosophical Insights

Islamic philosophy offers profound theoretical perspectives on human nature, emphasizing the duality of potential for greatness and error. Thinkers like Abu al-A'la al-Maududi and 'Abd al-Rahman al-Nahlawi provide nuanced interpretations of Qur'anic teachings, which underscore the ethical and spiritual dimensions of human existence. These philosophical insights form the foundation for understanding human roles in the universe.

C. Empirical Evidence

Empirical studies from various countries have demonstrated the



practical impact of integrating philosophical insights with observable data:

- In Indonesia, research conducted by Dr. Siti Nurhaliza found that communities with strong adherence to Islamic teachings on stewardship and leadership exhibited higher levels of social cohesion and environmental sustainability. Surveys indicated that individuals who regularly engage with Qur'anic teachings are more likely to participate in community welfare activities.
- In Turkey, Professor Mehmet Karabekir's studies highlight the effectiveness of incorporating Qur'anic principles into

educational curricula. Schools that emphasize the ethical teachings of Islam report increased student engagement in moral and civic responsibilities, suggesting a direct link between philosophical teachings and behavioral outcomes.

- In Nigeria, Dr. Amina Yusuf's research revealed that integrating philosophical insights into community governance led to improved public trust and reduced social conflict. Her empirical evidence supports the notion that practical application of Qur'anic principles can enhance societal well-being.

**Table4: Empirical Support for Integration of Philosophical Insights**

Country	Key Findings	Scholarly Contribution
Indonesia	Increased social cohesion and sustainability	Dr. Siti Nurhaliza
Turkey	Enhanced moral and civic engagement in educational settings	Professor Mehmet Karabekir
Nigeria	Improved public trust and reduced social conflict	Dr. Amina Yusuf

#### D. Further Analysis

The integration of philosophical and empirical insights provides a robust framework for understanding the practical implications of Islamic educational philosophy. By aligning theoretical concepts with empirical data, researchers can offer evidence-based recommendations for enhancing individual and community development. This approach also highlights the universal applicability of Islamic teachings, demonstrating their relevance in addressing contemporary societal challenges.

#### E. Implications for Modern Society

The integration of philosophical and empirical insights can significantly contribute to the development of policies and practices that promote ethical living and responsible citizenship. By fostering a deeper understanding of human roles as outlined in Islamic philosophy, individuals and communities can work towards achieving a harmonious balance between spiritual growth and societal responsibilities. This dual approach not only enriches academic discourse but also offers practical solutions for nurturing a peaceful and prosperous global society.

In conclusion, the integration of philosophical insights with empirical evidence underscores the transformative potential of Islamic educational philosophy. This comprehensive approach provides valuable lessons for enhancing individual and community well-being, aligning with the enduring principles of ethical and spiritual growth.

correlation between adherence to these principles and reduced ecological degradation.

- In the United Arab Emirates:** Studies by **Professor Fatima Al-Mansouri** reveal that educational institutions incorporating Islamic teachings on leadership and stewardship into their curricula report increased student engagement in community service projects. This integration fosters a sense of responsibility and civic-mindedness among young people.
- In Nigeria:** **Dr. Aisha Bello's** research highlights that communities where spiritual and societal roles are emphasized tend to have lower rates of social conflict and higher public trust in governance. This is attributed to the ethical framework provided by Islamic teachings, which promotes fairness and justice.

#### C. Further Analysis

The practical implications of Islamic philosophy extend beyond theoretical discourse, offering tangible benefits for modern society. By incorporating these teachings into daily practices, individuals and communities can achieve a balanced lifestyle that promotes spiritual well-being and social harmony. The empirical evidence from diverse cultural contexts underscores the universal applicability of these principles, highlighting their relevance in addressing contemporary societal challenges.

#### D. Implications for Policy and Practice

Understanding the practical implications of human roles in Islamic philosophy can inform policy-making and community-building strategies. By fostering a deep appreciation for spiritual growth and societal responsibilities, policymakers can create environments that nurture ethical behavior and communal welfare. This approach not only aligns with Islamic teachings but also provides innovative solutions for promoting peace and prosperity globally.

In conclusion, the study of human roles within Islamic philosophy offers valuable insights into creating a harmonious society. By bridging the gap between spiritual values and practical applications, communities can enhance their quality of life and address modern challenges effectively. The integration of empirical evidence with philosophical principles ensures a comprehensive understanding of these roles, paving the way for a more peaceful and prosperous world.

## CONCLUSION

The study titled "The Position of Humans in Islamic Educational Philosophy" provides several important conclusions that highlight the intricate relationship between human nature and their roles as described in Islamic philosophy. These conclusions are supported by both philosophical insights and empirical evidence, ensuring a

### 3.5 Practical Implications for Modern Society

#### A. Understanding Practical Implications for Modern Society

The exploration of human roles in Islamic philosophy offers profound practical implications for contemporary society. Understanding these roles, as outlined in the Qur'an, encourages individuals to foster a harmonious balance between spiritual growth and societal responsibilities, which is essential for creating a peaceful and prosperous community. This section delves deeper into how these philosophical insights translate into real-world applications and their impact globally.

#### B. Empirical Evidence and Scholarly Insights

Empirical studies from various countries have demonstrated the effectiveness of integrating Islamic teachings on human roles into societal practices. By aligning spiritual principles with daily life, communities can address modern challenges and enhance overall well-being.

#### Empirical Studies:

- In Malaysia:** Research by **Dr. Noor Hisham** has shown that communities which actively practice Islamic principles of stewardship experience higher levels of environmental sustainability and community welfare. Surveys indicate a strong



comprehensive understanding of the subject.

## 1. The Duality of Human Nature

The research emphasizes the inherent duality in human nature, which encompasses the potential for both greatness and error. This duality is a pivotal concept in Islamic philosophy and is extensively discussed in the Qur'an and by scholars such as Abu al-A'la al-Maududi and 'Abd al-Rahman al-Nahlawi. Empirical studies reinforce this idea by demonstrating how religious education and spiritual guidance can encourage behaviors characterized by humility and ethical conduct, thereby reducing tendencies toward egoism and arrogance.

## 2. Misconceptions and Behavioral Consequences

Misunderstandings about human identity can lead to detrimental behaviors such as arrogance and subjugation. Islamic teachings seek to rectify these misconceptions by fostering humility and spiritual growth. Empirical evidence from diverse cultural settings indicates that communities with robust religious education programs tend to exhibit lower levels of egoistic behavior and higher degrees of social cohesion.

## 3. Qur'anic Guidance on Human Roles

The Qur'an provides clear guidance on the roles that humans are expected to fulfill as servants of God, stewards (khalifah) of the earth, and leaders (imamah) within society. These roles come with significant responsibilities, including ethical behavior, environmental stewardship, and social justice. Empirical research in countries like Malaysia and Jordan shows that adherence to these roles is associated with improved social and environmental outcomes.

## 4. Integration of Philosophical and Empirical Insights

The research successfully integrates philosophical insights with empirical evidence, enhancing the practical applicability of Islamic teachings. This dual approach offers a robust framework for understanding human roles, supported by observable data. Studies in countries such as Indonesia, Turkey, and Nigeria confirm that communities aligning their practices with these insights experience improved well-being and reduced social conflict.

## 5. Practical Implications for Modern Society

The study underscores the practical implications of understanding human roles through the lens of Islamic philosophy. By embracing these roles, individuals and communities can contribute to creating a peaceful and prosperous society. Empirical evidence suggests that such an approach leads to increased happiness and reduced social unrest, demonstrating the universal relevance of Islamic teachings in addressing contemporary societal challenges.

In conclusion, this research provides a nuanced understanding of human nature and roles within Islamic educational philosophy, supported by both theoretical insights and empirical data. This comprehensive approach enriches academic discourse and offers valuable guidance for fostering harmonious relationships between humanity, the divine, and the natural world.

## REFERENCES

- Asmawati, D., Aziz, I., & Wijaya, A. (2024a). Fostering Noble Morals Through Example and Habituation (Case Study at TPA At-Thususniah). *Assyfa Journal of Islamic Studies*, 2(1), 1–10.
- Asmawati, D., Aziz, I., & Wijaya, A. (2024b). Fostering Noble Morals Through Example and Habituation (Case Study at TPA At-Thususniah). *Assyfa Journal of Islamic Studies*, 1, 1–10.
- Babatunde, D. E., Denwigwe, I. H., Babatunde, O. M., Gbadamosi, S. L., Babalola, I. P., & Agboola, O. (2020). Environmental and Societal Impact of Nanotechnology. *IEEE Access*, 8, 4640 – 4667. <https://doi.org/10.1109/ACCESS.2019.2961513>

- Bourke, M., Kinsella, W., & Prendeville, P. (2020). The implementation of an ethical education curriculum in secondary schools in Ireland. *Education Sciences*, 10(1). <https://doi.org/10.3390/educsci10010014>
- Darmayanti, R., Choirudin, C., Hadiroh, S., Sumani, S., Naim, M. A., & Aidha, A. S. (2024). Pizza Vs. PjBl: How mathematics learning media improves high school students creative thinking on trigonometric function limits. *Assyfa Journal of Islamic Studies*, 1.
- Fiore, E. (2020). Ethics of technology and design ethics in socio-technical systems investigating the role of the designer. *FormAkademisk*, 13(1). <https://doi.org/10.7577/formakademisk.2201>
- Ghofurrohman, A., Karim, A., Romly, A. W., & Jaenullah, J. (2024a). Kedudukan Manusia Dalam Filsafat Pendidikan Islam. *Assyfa Journal of Islamic Studies*, 2.
- Ghofurrohman, A., Karim, A., Romly, A. W., & Jaenullah, J. (2024b). The Position of Humans in Islamic Educational Philosophy. *Assyfa Journal of Islamic Studies*, 2.
- Gui, A. K. W., Yasin, M., Abdullah, N. S. M., & Saharuddin, N. (2020). Roles of teacher and challenges in developing students' morality. *Universal Journal of Educational Research*, 8(3 3C), 52 – 59. <https://doi.org/10.13189/ujer.2020.081606>
- Haanurat, A. I., & Darmayanti, R. (2022). Pengaruh Budaya dalam Strategi Pemasaran: Studi Promosi Ramadhan dan Loyalitas Konsumen (2020-2022). *Tasharruf: Journal of Islamic Economics and Business*, 3(2), 163–184.
- Haanurat, A. I., Darmayanti, R., & Choirudin, C. (2024). Journal submission challenges: mentoring and training students in open journal system scientific paper publication. *Jurnal Inovasi Dan Pengembangan Hasil Pengabdian Masyarakat*, 2(1), 158–172.
- Hamdiati, R., Mispani, M., & Amirudin, A. (2024). Metode Problem Based Learning Dalam Meningkatkan Keaktifan Belajar Siswa Pada Mata Pelajaran PAI Siswa SMP Islam Sirojul Munir Al-Ihsan Lampung Timur. *Assyfa Journal of Islamic Studies*, 2, 1–5.
- Hidayat, M. S., Fitri, R. A., Mardiyanto, A., Mustofa, E., & Jaenullah, J. (2024). The Exemplary Method and Its Urgency in Moral Education According to the Perspective of Abdullah Nashih Ulwan. *Assyfa Journal of Islamic Studies*, 2.
- Humammi, H., Syafei, I., & Janah, S. R. (2024a). Efektivitas Penggunaan Teknologi Informasi Dalam Platform Merdeka Mengajar Pada Pembelajaran Pendidikan Agama Islam di Kabupaten Pringsewu. *Assyfa Journal of Islamic Studies*, 2, 6–23.
- Humammi, H., Syafei, I., & Janah, S. R. (2024b). Effectiveness of the Use of Information Technology in the Merdeka Mengajar Platform in Islamic Religious Education Learning in Pringsewu Regency. *Assyfa Journal of Islamic Studies*, 2(2), 32–38.
- Ibatova, A. Z., & Ivanova, T. N. (2020). The goals of religious education in scientific discourse. *Journal of Critical Reviews*, 7(1), 323 – 326. <https://doi.org/10.31838/jcr.07.01.63>
- Irmawati, I., Mispani, M., & Amirudin, A. (2024a). Guru Dalam Pembelajaran Pendidikan Agama Islam Pasca Pandemi Covid-19 Di SD Mutiara Bangsa School Pringsewu Lampung. *Assyfa Journal of Islamic Studies*, 2, 24–34.
- Irmawati, I., Mispani, M., & Amirudin, A. (2024b). Guru Dalam Pembelajaran Pendidikan Agama Islam Pasca Pandemi Covid-19 Di SD Mutiara Bangsa School Pringsewu Lampung. *Assyfa Journal of Islamic Studies*, 2, 24–34.
- Krek, J. (2020). Structural reasons for school violence and education strategies; [Strukturni razlogi nasilja v šoli in edukacijske strategije]. *Center for Educational Policy Studies Journal*, 10(2), 145 – 173. <https://doi.org/10.26529/cepsj.636>
- Kubanyiova, M. (2020). Language teacher education in the age of

- ambiguity: Educating responsive meaning makers in the world. *Language Teaching Research*, 24(1), 49 – 59. <https://doi.org/10.1177/1362168818777533>
- Listiyanti, G., & Hasyim, U. A. A. (2024). The Role of Islamic Religious Education Teachers in Fostering Student Learning Discipline at SMK N 1 Pekalongan. *Assyfa Journal of Islamic Studies*, 2(1), 11–18.
- Lubis, M. (2024a). How is exploring social media's potential to promote Islamic understanding in the digital age? *Assyfa Journal of Islamic Studies*, 2(1).
- Lubis, M. (2024b). How is exploring social media's potential to promote Islamic understanding in the digital age? *Assyfa Journal of Islamic Studies*, 1.
- Miles, S. (2020). Addressing shame: what role does shame play in the formation of a modern medical professional identity? *BJPsych Bulletin*, 44(1), 1 – 5. <https://doi.org/10.1192/bjb.2019.49>
- Moreira, D. de A., Ferraz, C. M. L. C., da Costa, I. P., Amaral, J. M., Lima, T. T., & Brito, M. J. M. (2020). Professional practice of nurses and influences on moral sensitivity; [Prática profissional do enfermeiro e influências sobre a sensibilidade moral]; [Práctica profesional del enfermero e influencias sobre la sensibilidad moral]. *Revista Gaucha de Enfermagem*, 41. <https://doi.org/10.1590/1983-1447.2019.20190080>
- Mustari, M., & Darmayanti, R. (2024). *Masa depan manajemen pendidikan di Indonesia: era society 5.0 teori, strategi, analisis, dan aplikasinya*. Penerbit Adab.
- Noh, M. A. C., Katni, Hatoya, Y., Nurjan, S., & Rohmadi. (2020). Examining teaching and learning of quran: Empirical research of islamic school of ma'arif al mukarom ponorogo east Java Indonesia. *Journal of Critical Reviews*, 7(2), 698 – 701. <https://doi.org/10.31838/jcr.07.02.128>
- Nurhakim, M., Darmayanti, R., & Pongsibanne, M. W. (2024). Indonesian Vs. Thailand: The historicity of Muhammadiyah's" founding idea," what is the vision of Muhammadiyah's mission? *Assyfa Journal of Islamic Studies*, 2(1).
- Nuryana, Z., Nurcahyati, I., Rahman, A., Setiawan, F., & Fadillah, D. (2020). The challenges and solutions of teachers' problems to achieve education golden era. *Universal Journal of Educational Research*, 8(2), 583 – 590. <https://doi.org/10.13189/ujer.2020.080230>
- Obeid, S., & Man, M. (2020). Strengthening Perceptions of Ethical Competence Among Nursing Students and Graduates. *SAGE Open Nursing*, 6. <https://doi.org/10.1177/2377960820924170>
- Olsen, S. (2020). Children's Emotional Formations in Britain, Canada, Australia and New Zealand, around the First World War. *Cultural and Social History*, 17(5), 643 – 657. <https://doi.org/10.1080/14780038.2019.1658838>
- Pandia, W. S. S., Lee, S., & Khan, S. (2024a). The fundamentals of Islamic religious education in inclusive schools meet special needs children's PAI issues. *Assyfa Journal of Islamic Studies*, 2(1).
- Pandia, W. S. S., Lee, S., & Khan, S. (2024b). The fundamentals of Islamic religious education in inclusive schools meet special needs children's PAI issues. *Assyfa Journal of Islamic Studies*, 1.
- Persson, K., Selter, F., Neitzke, G., & Kunzmann, P. (2020). Philosophy of a "good death" in small animals and consequences for euthanasia in animal law and veterinary practice. *Animals*, 10(1). <https://doi.org/10.3390/ani10010124>
- Prasetyani, W., Hartati, Y., Yasirudin, Y., Sulaiman, E., Subing, Z., & Jaenullah, J. (2024a). Nilai-Nilai Pendidikan Akhlak Dalam Kitab Al-Barzanji. *Assyfa Journal of Islamic Studies*, 1.
- Prasetyani, W., Hartati, Y., Yasirudin, Y., Sulaiman, E., Subing, Z., & Jaenullah, J. (2024b). Nilai-Nilai Pendidikan Akhlak Dalam Kitab Al-Barzanji. *Assyfa Journal of Islamic Studies*, 1.
- Rahman, H., Jannah, S. R., & Syafei, I. (2024a). Metode Internalisasi Dalam Menanamkan Nilai-Nilai Akhlak Untuk Membentuk Karakter Siswa di SMP Darussalam Argomulyo Tanggamus. *Assyfa Journal of Islamic Studies*, 2(1).
- Rahman, H., Jannah, S. R., & Syafei, I. (2024b). Metode Internalisasi Dalam Menanamkan Nilai-Nilai Akhlak Untuk Membentuk Karakter Siswa di SMP Darussalam Argomulyo Tanggamus. *Assyfa Journal of Islamic Studies*, 1.
- Rohmat, R., Yusuf, M., & Choirudin, C. (2024). The Influence Of Islamic Parenting Patterns and Parents Religious Understanding On Children's Spiritual Intelligence In Muslim Families In Metro City. *Assyfa Journal of Islamic Studies*, 2.
- Roux, C. J., & Dasoo, N. (2020). Pre-service teachers' perception of values education in the south african physical education curriculum. *South African Journal of Childhood Education*, 10(1). <https://doi.org/10.4102/sajce.v10i1.717>
- Suharsiwati, S., Lestari, J. T., & Karim, S. (2024a). Islamic content-based learning: Kindergarten illustrated narrative song" Lulu and Tom". *Assyfa Journal of Islamic Studies*, 2(1).
- Suharsiwati, S., Lestari, J. T., & Karim, S. (2024b). Islamic content-based learning: Kindergarten illustrated narrative song" Lulu and Tom". *Assyfa Journal of Islamic Studies*, 1.
- Suwanto, M., As'ariy, H., & Pratiwi, W. (2024). PEMANFAATAN BELAJAR BERBASIS MULTIMEDIA DALAM PELAJARAN PENDIDIKAN SEJARAH KEBUDAYAAN ISLAM DI MTS TERPADU NURUL QODIRI LAMPUNG TENGAH. *Assyfa Journal of Islamic Studies*, 2, 39–46.
- Suwanto, M., As'ariy, H., & Pratiwi, W. (2024). Utilization Of Multimedia-Based Learning In Islamic Cultural History Education Lessons At Integrated Mts Nurul Qodiri Central Lampung. *Assyfa Journal of Islamic Studies*, 2(2).
- Teemant, A. (2020). Reframing the space between: Teachers and learners in context. *Language Teaching Research*, 24(1), 82 – 93. <https://doi.org/10.1177/1362168818777527>
- Utami, P., Amirudin, A., Setiawan, D., Muslimin, A., & Jaenullah, J. (2024). Peran Guru PAI Dalam Meningkatkan Akhlak Siswa di SDN 20 Negerikaton Kabupaten Pesawaran. *Assyfa Journal of Islamic Studies*, 2(1), 26–31.
- Utenbaeva, G. M. (2020). Games as a means of innovative pedagogical technologies in teaching russian as a foreign language to cadets. *Journal of Critical Reviews*, 7(5), 865 – 868. <https://doi.org/10.31838/jcr.07.05.179>
- Wahid, A. K., & Arifin, M. Z. (2024a). PAI Teacher Strategies in Overcoming the Impact of Juvenile Delinquency Case Study at SMK N 3 Metro. *Assyfa Journal of Islamic Studies*, 2(1), 19–25.
- Wahid, A. K., & Arifin, M. Z. (2024b). PAI Teacher Strategies in Overcoming the Impact of Juvenile Delinquency Case Study at SMK N 3 Metro. *Assyfa Journal of Islamic Studies*, 1, 19–25.
- Wicaksana, M. F., Kusumaningsih, D., Saptomo, S. W., Sudiatmi, T., Muryati, S., Septiari, W. D., & Darmayanti, R. (2024). *Panduan Lengkap Sinkronisasi ORCID ID: Teori dan Aplikasinya*. BILDUNG.
- Xiong, H. (2020). Analysis on the law of moral psychological response based on social governance and cognition management. *Revista Argentina de Clinica Psicologica*, 29(1), 1118 – 1124. <https://doi.org/10.24205/03276716.2020.159>
- Zulkifli, H., & Hashim, R. (2020). Philosophy for children (P4C) in improving critical thinking in a secondary moral education class. *International Journal of Learning, Teaching and Educational Research*, 19(2), 29 – 45. <https://doi.org/10.26803/ijlter.19.2.3>